



CRE

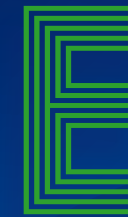
Creating Careers

ATE

PROSPECTUS 2026



Principal's welcome	4
Reasons to choose Southport College.....	5
Student awards	6-7
Student Hub	8
Study Hub	9
Safeguarding, Welfare & Support.....	10
Financial & Learning Support.....	11
Our facilities	12-15
Clinical Skills Hub.....	16-17
Clouds Restaurant	18-19
Hair & Beauty Salons	20-21
Enrichment Hub	22-23
Fantastic results & exciting destinations.....	24-25
Welcomefest	26-27
Progress Tutors	28
English and maths.....	29
Industry links	30-31
Apprenticeships	32-33
Free travel passes.....	34-35
Find your level.....	36-37
Early Years Education & Care.....	38-39
Digital Software Development	40
Travel & Tourism	41
Art & Design	42-43
Graphic Design & Illustration	44-45
Creative Media & Photography.....	46-47
Electrical.....	48
Engineering	49
Design, Surveying & Planning for Construction.....	50-51
Construction Multi-Skills	52
Bricklaying	53
Plumbing	54-55
Carpentry & Joinery	56
Painting & Decorating.....	57
Motor Vehicle Engineering	58-59
Healthcare & Health Science	60-61
Beauty.....	62
Hairdressing	63
Hospitality.....	64-65
Professional Chef.....	66-67
Foundation Learning	68-69
Connect	70
Aspire	71
Engage	72
How do I apply?	74-75



Enterprise & Early Years

Our Enterprise and Early Years Department includes our Digital Production, Coding and IT courses, Travel and Tourism, Child Care and The Early Years Educator. The department benefits from dedicated industry experienced staff who will support you every step of the way and has fantastic facilities in specially created classrooms and workshops. These including fantastic suites, a mock airline cabin and a fully equipped on-site nursery and pre-school.



School of Art & Design

There has been a School of Art on this site since 1938 and the building still embraces many of the original beautiful Art Deco features, with bright spacious studios, a grand marble staircase and wonderful exhibition areas. The facilities however are of course bang up to date, and our School of Art students have use of the latest iMacs, printmaking equipment, cameras, green screens and much more, as well as talented, inspiring teachers to support you every step of the way.

Whatever course you choose, you will find our School of Art and Design an exciting place to develop your skills and fulfil your passion.



Centre of Excellence for Construction & Trades

Almost 3 million people are employed in the UK construction industry and our Centre for Construction provides a wide range of courses, giving you the opportunity to create a valuable career across the sector.

You will be taught by industry experienced professionals, who all have experience of the career you are training for and know the skills employers want.

The facilities are excellent, modern workshops, with the latest technology and industry standard equipment and our Pennington Building has recently been fully refurbished.

So the skills you learn and the experience you gain will set you in good stead for a successful career.



Faculty for Health & Wellbeing

Our faculty for Health and Wellbeing comprises a range of different departments and offers fantastic facilities and passionate supportive staff to help you create a career in this diverse and very rewarding sector.

The faculty has amazing facilities, including a professional hair and beauty salon and a fully working professional kitchen with a newly refurbished fine dining restaurant; plus brand new hi-tech, mock, teaching hospital wards. So whatever course you choose, you will have an excellent experience and leave us fully prepared for a successful career ahead.



"I do hope that this publication inspires you to join the thousands of other students who choose to take their next step with us each year."

Michelle Brabner
Principal

I am delighted to introduce you to our brand new 2026 prospectus, which I hope will give you an insight into Southport College life with us and help you discover your perfect course.

I look forward to welcoming you onto campus soon.

Our aim

Our aim is to prepare you for your chosen career, next steps in education and long term aspirations. At our spacious campus, which is easily accessible from the town centre, we offer excellent teaching from industry experienced teachers and individually tailored student support. Our facilities are first-class and our learning environment is safe and secure. Our students are at the heart of everything we do and all the staff are committed to helping every one of you realise your potential and build a fantastic future.

Your future

Our students move into quality employment or go on to University following completion of their studies at Southport College. To ensure that our students leave us as well-rounded individuals we enhance our courses by providing many additional opportunities including valuable work placements or work experience through our strong industry links; as well as the chance to take part in sports, volunteering, trips and special events.

Our Guidance

As a 16 year-old the range of options available to you when you leave school can seem overwhelming, so our Student Guidance team is available to contact for careers and course advice, ensuring you make the best choice for your next steps.

Thank you to all our students who are featured in this year's prospectus. I do hope reading it inspires you to join them and the thousands of other students who choose to take their next step with us each year.

- Excellent results and student progression
- Leading provider of Apprenticeships in the local area
- Brilliant work placements and work related projects
- Strong links with local businesses and industry professionals

- Easily accessed from the town centre
- Free travel pass (Terms and conditions apply)
- Free breakfast for all
- Free lunch for eligible students
- Free on campus gym

- Fantastic facilities with realistic work environments
- Friendly, industry-experienced teachers
- Outstanding student support and courses tailored to your needs
- Exciting Enrichment Programme

REASONS TO
CHOOSE
SOUTHPORT
COLLEGE



STUDENT AWARD WINNERS

At our annual awards ceremony
we celebrate students' success
with their friends and family
in style!



Scan to watch our awards video.

southport.ac.uk/celebrate



The heart of the College

Our new Student Hub is a fantastic, bright and welcoming space right at the heart of the College. It is the first place you come to when you enter the building in the morning and there are a whole host of teams based there ready to help you, whether you need support and guidance or just have a quick question to ask.

There are plenty of PC work stations if you need to catch up on some work or submit an assignment. Plus there are lots of comfy sofas too, ideal for when you want to take time to relax and unwind or have a quick catch up with a friend!

Call into the Student Hub for:

- Progress Tutors
- The Study Hub
- Careers Advice
- Travel Passes
- Financial Support
- Counselling
- Student Welfare
- Safeguarding
- General Enquiries

THE STUDY HUB

A wide range of resources

An integral part of the Student Hub is our fantastic Study Hub, packed with resources to help you with assignments and preparing for exams.

It is run by a team of friendly staff, who are always on hand to help and is a great space to use when you need somewhere quiet to work independently.

KNOWLEDGE PLUS

Knowledge Plus is the smart way to boost your success. For every hour you spend in class, you match it with an hour of independent study, helping you lock in your learning and extend your knowledge.

The Study Hub is here to make it easier, with plenty of resources and a supportive team of study skills mentors ready to guide you whenever you need.

STUDY SKILLS MENTORS

If you need help with planning an assignment, research or lots more besides, our study skills team are on hand to guide and support you. Plus they can also offer 1 to 1 support or supervised study to any Level 3 students who would benefit.

STUDY SKILLS SERVICES

MEET THE TEAM TO HELP YOU WITH:

- REFERENCING
- RESEARCH SKILLS
- ESSAY WRITING
- ASSIGNMENT PLANNING
- TIME MANAGEMENT
- REVISION
- PRESENTATION

Safeguarding, Welfare & Support

We recognise that our duty of care to students and their wellbeing is paramount at all times. Safeguarding Officers offer support to all learners who may be facing adversity, including those who are Care Experienced, Young Carers, Teenage Parents or who are under the supervision of the Youth Offending Team.

We also work with learners who are in financial crisis and are able to offer financial support via charitable bursaries (subject to eligibility), housing support and access to local food banks.

Feel safe

Southport College is committed to creating an environment that is safe and welcoming to all students. As a College, our community includes young people aged 16 to 18 and vulnerable adults.

We ask that you wear your student ID badge at all times and our security staff monitor this throughout the day. For this reason and as part of our commitment to safeguard our students and provide a secure place to learn; we ask all potential students to declare if they have a criminal conviction, any pending court cases or if they have been charged with any criminal offence either at application stage or during their course.

You will be asked to complete a declaration at the point of enrolment. If you do have convictions, you won't be automatically excluded from enrolling on a College course; each case will be considered individually.



WE CAN ALSO HELP YOU WITH:

- Information, advice and guidance about courses
- Impartial careers guidance and support
- Financial assistance such as travel passes, help with kits, uniforms and childcare
- Counselling support

STUDENT SUPPORT

Financial Support

16-19 bursaries

This is a fund intended to assist those students who face the greatest barriers to being in education, e.g. care leavers, young people in care and young people in receipt of Universal Credit. Students who do not qualify for the full £1,200 may still qualify for help from the Bursary Fund with course-related costs, e.g. kit, equipment, uniforms, books. Please ask at your course discussion.

Discretionary bursaries

Students who do not meet the criteria for the above, but are facing financial hardship, can apply for help towards uniforms, certain trips, UCAS fees, DBS and other course related costs. Students must have a household income of less than £25,000 as assessed by HMRC, or the family must be in receipt of a means-tested benefit.

Travel passes

The College offers students* who live over 1 mile away from College and study a full-time Further Education course the opportunity to apply for a free travel pass or funds. See page 34.

*Students aged 16-18 who live more than 3 miles away from the College on a full time course may be eligible for travel passes (or funds where necessary). Students who live 1 to 2.9 miles away from the College and are 16-18 are means tested before passes are issued.

Care to Learn (Childcare support)

Care to Learn provides financial support for young parents. The scheme can pay up to £180 a week towards childcare. You must be aged under 20 at the start of your course.

Learning Support

Support for identified students

If you have any learning support needs, our friendly Learning Support Team will be happy to help you.

We offer tailored support to ensure every learner can thrive and succeed. We regularly review all students receiving support to ensure the most appropriate support is in place.

We are proud to have an outstanding student support structure that is tailored to your individual needs.

In addition, the College also has:

- A Health and Wellbeing Coordinator who coordinates a service for students identified with a medical need, attends first aid calls and can signpost students to relevant outside agencies.
- Learning support in and out of class
- Learning Support Hub (to aid the transition to College)
- Personal care assistants
- Safe 'time-out' space
- Sensory Room
- Social/emotional/behavioural support
- Supervision at lunch and break time if needed
- Support and/or screening by our Specialist Tutoring Team for students with specific learning difficulties (SpLDs) in order to apply for access arrangements e.g. extra time, reader, scribe etc.
- Support with communication skills
- Transition visits

For further information please contact the Learning Support Team on 01704 392862 or via email on learningsupport@southport.ac.uk

A MODERN LEARNING ENVIRONMENT



At Southport College we have fantastic facilities. Our students benefit from bright modern learning environments with the latest tools and technology for their field, so that when you go on to further study or into work you are already experienced in using high quality industry standard equipment.

We are constantly investing! We have recently expanded our indoor brick-laying workshops, built brilliant new carpentry and joinery workshops and added more EV's to our motor vehicle workshop. The T Level Engineering department has benefited from a £1.3m investment programme updating a fantastic range of tools including plasma cutters, lathes, floor mounted pillar drills and much more. It's all designed to simulate real industry and give you the practical experience you need.

Whatever course you choose at Southport College, you can be sure of a great learning environment and the very best equipment for the job, giving you a real head start creating your career!



OUR FACILITIES



Succeed in your
dream career

At Southport College you'll benefit from learning in realistic working environments in every department, giving you the confidence and skills to succeed in your dream career.

We have our very own nursery, set up with vibrant wall displays and activity tables, where children from nearby early years settings come and join us, which allows our students to plan activities and get hands on experience.

Concept is our professionally run salon. It's open to the public and allows hair and beauty students to gain real salon experience with everything from cuts or colours to massage therapies and facials, using professional salon products and with close supervision and support from our highly experienced staff.

Our School of Art and Design is home to bespoke, bright and spacious studios. We have a range of traditional printing presses for students to use as well as a textiles studio with sewing machines and a graphics suite with iMacs.

Plus we have Clouds, our own professional kitchen, newly refurbished bar and fine dining restaurant.



Your very own hospital wards

As part of a recent £2.3m investment, our T Level Health and Social Care students now have access to an unrivalled learning environment with our brand-new Clinical Skills Hub.

Featuring spacious mock hospital wards and a wide range of industry-standard medical equipment, the simulated teaching spaces give students the opportunity to develop and practice essential care skills in a realistic yet supportive college setting.

The wards are also equipped with a variety of advanced, life-like mannequins that enable students to gain invaluable hands-on experience caring for "patients" with a wide range of medical needs.

"We are delighted to support this fantastic new facility that will benefit the college, the students and the Trust.

"After recently winning the College's T-Level Partner Employer of the Year Award, we are looking forward to continuing to grow our partnership and develop even more collaborative learning opportunities."

**Carol Fowler,
Deputy Director
of Governance at
Mersey and West
Lancashire NHS
Trust**

"The beds and blood pressure monitors are exactly the same as in hospital, giving us confidence on placement. The mannequins talk and simulate real patients, giving a realistic approach to our practical work."
Macy Cook | T Level Health

Next-level learning spaces

Our new Clinical Skills Hub goes far beyond its impressive mock hospital wards. It also includes its own dedicated classrooms, designed to complement the practical training environment and provide students with the very best in teaching and learning.

Attached to the teaching wards, the classrooms enable a seamless transition between practical and theoretical learning. This ensures that students can develop valuable hands-on clinical skills while immediately connecting them with the underpinning knowledge required to excel in the healthcare sector. This prepares our students with the confidence, competence, and professional skills needed to progress to degree level study and their future careers.



clouds

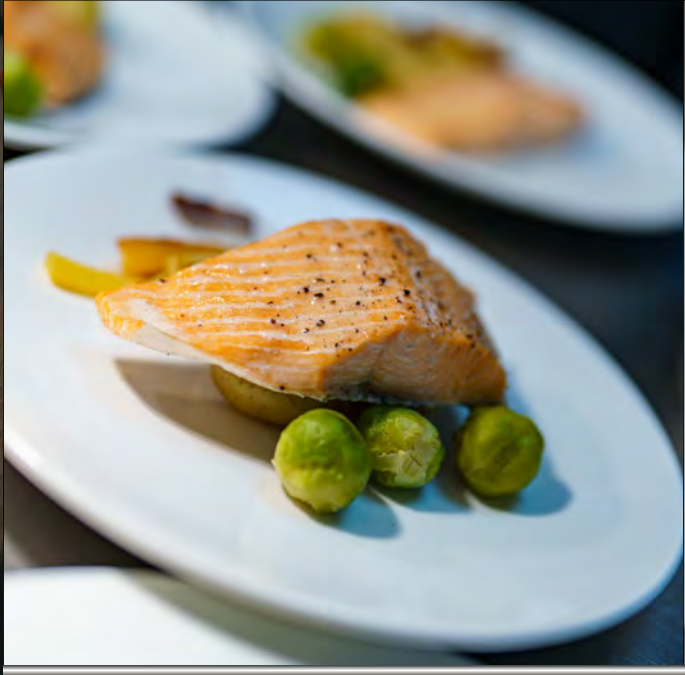
RESTAURANT
Southport's best kept secret

RESTAURANT

Our fully operational fine dining restaurant, gives Hospitality & Catering students the hands-on experience needed to succeed in the industry. It attracts a large regular clientele and has recently been fully refurbished creating a welcoming, fresh, modern ambience.

Through running the restaurant and bar, students develop essential skills in customer service, food and beverage management and event coordination, in preparation for rewarding careers.

Clouds is open to the public, offering fine dining lunch experiences and a variety of special events. New guests are always welcome! For reservations, please call 01704 392676



SALONS



concept
not just a salon

Live working salons

We believe our students are best prepared for careers in industry by training in real working environments. Hair and beauty students train in Concept, our fantastic live working salon. Kitted out with all the chairs, treatment rooms, nail bars, products and equipment you would expect to see in top salons and spas, you will soon be giving real paying clients fabulous treatments. From cuts & colours to curly blow dries and hot stone massages to facial electrical treatments, you will get all the skills needed for your fabulous future career.

New clients always welcome

To book your appointment please contact the Concept Salon Reception.
Telephone: 01704 392660
or email: conceptreception@southport.ac.uk

9.00am - 4.30pm,
Monday to Thursday
and from 9.00am - 3.30pm
on Fridays.

ENRICHMENT HUB

Life at Southport College is so much more than just your course!

Our awesome Enrichment Team is always putting on loads of fun activities, events and opportunities for you to get involved in. It's the perfect way to try something new, pick up fresh skills and meet loads of new friends along the way. With so much to choose from, there's always something happening and it's your chance to make your college experience unforgettable!

LGBTQIA+

We are supportive and inclusive of all students and were the first College in the country to be awarded the Rainbow Flag Award, recognising our commitment to our LGBTQIA+ community. There is a dedicated LGBTQIA+ student group and College recruits LGBTQIA+ Student Ambassadors each academic year who represent the community at various events across the year. In addition to the support we offer our students, we are also happy to extend this to parents/carers by providing information and guidance if needed.



A space to chill and have fun!

Our brand-new Enrichment Hub is the ultimate space to chill, connect and get creative.

Inside you'll find:

- A free pool table & table tennis
- Gaming zones
- Art materials and creative spaces
- Cosy sofas to relax with friends
- Fully equipped free to use student gym

It's also home to Spark Radio, our very own student-run station, where you can try out broadcasting, programming or even launch your own podcast.

During Welcome Week, come and meet the Enrichment Team, explore everything on offer and discover all the ways you can get involved.

Find out about all the great activities available for you.



SPARK Radio

Our very own student station where you can host your own shows & podcasts. Listen now...



southport.ac.uk/radio

British Aerospace bound!

A valuable work placement is a key part of T Levels and 3 of our Engineering students have successfully secured just that! They were selected from hundreds of applicants nationwide to gain three of only seven placements available at BAE Systems in Salmsbury and Warton.



Archie Neilson | Peter Ashton | Calum Borland

Congratulations guys, we wish you every success.

FANTASTIC RESULTS & EXCITING DESTINATIONS

T Levels and Level 3 Extended Diplomas are the equivalent of three A-Levels and worth up to 168 UCAS points, which can be used to get on to your chosen degree course and lead to your dream career.

Careers

Recent students have progressed on to exciting careers with a range of high profile companies all around the UK, including:

- BAE Systems
- BBC
- British Gas
- Clayton Architecture Limited
- Cooperheat
- Cunard
- easyJet
- Emirates
- Fletchers Solicitors
- Frank Rogers Quantity Surveying
- Hayes Travel
- Jaguar Land Rover
- Jet2.com
- Kids Planet Nurseries
- Lattimer's Engineering
- Liverpool Women's Hospital
- Merseyside and West Lancashire NHS Trust
- Merseyside Police
- Mikhail Leisure Group
- The Armed Forces
- The Vincent Hotel
- Tower Heating
- Tui
- Virgin Atlantic

University

Southport College Students can be found at universities all across the country, including many in the prestigious Russell Group:

- Bangor University
- Buckinghamshire New University
- Edge Hill University
- Exeter University
- Futureworks
- Goldsmiths University
- Kings College London
- Leeds Beckett University
- Leeds College of Art
- Liverpool John Moores University
- LMA
- Manchester Metropolitan University
- Norland
- Nottingham Trent University
- SAE Institute
- Sheffield Hallam University
- University Arts London
- University of Brighton
- University of East Anglia
- University of Lancashire
- University of Liverpool
- University of Manchester
- University of Salford
- University of York

WELCOME FEST

Welcoming and fun

It's a really informative, fun-packed day, that's all about helping you feel confident and ready to start College.

You'll get to meet your new teachers, get a taste of your courses and start making friends with your future classmates so by the time September rolls around, you'll feel totally prepped.

Everything you need to know

It's also a great chance to find out about free travel passes, student support, any kit you might need and if there's any prep or reading you can do to get ahead. Staff will be around to answer your questions, show you around and help with anything you're unsure about.

Festival vibe

There is a real festival vibe to lunch time with free BBQ-style eats, tunes from our very own Spark Radio presenter Andy Hilbert and some special guests; the adorable alpacas from Natterjack! Oh, and don't forget the ice cream van with free 99s, so make sure you snag one (or two)!

Welcomefest is a total must! Loads of students say it helped really them for starting Southport College and they had the best time too.

The first part of your student experience is welcomefest and all students who have applied to come to Southport College are invited.

This is our VIP event held just after your GCSE's finish and is exclusively for those joining us in September.



PROGRESS TUTOR

Progress Sessions

You will have timetabled sessions with your Progress Tutor where as a group, you'll be discussing a whole host of fascinating topics to help develop your knowledge about society, health, wellbeing and careers, all building your skills for life.

You'll learn all sorts of new things about equality and diversity, budgeting and finance and much more, all designed to help you as an adult.

A big part of what the Progress Team do is preparing you for your future career. We can work with you to build a fantastic CV or UCAS application that will help you into the career, Apprenticeship or University you are dreaming of.

One-to-one help

You will have one-to-one sessions with your Progress Tutor too, which are excellent opportunities to receive individually tailored support during your time at college.

We will discuss:

- **Progress in your subjects**
- **What support you need in college and how we can help. We can also signpost you to other college services such as careers, welfare and safeguarding**
- **What your career goals are and how we can support you to work towards these**
- **Your applications to university, apprenticeships and employment and how to make them stand out**

What we do

- **Help you to prepare for your future career**
- **Offer advice on progression options**
- **Support you in completing your qualification**
- **Monitor your progress and attendance in college**
- **Link you with other support services in the college**

All Southport College students have a dedicated Progress Tutor who is here to offer you support and help you to make progress on your course, as well as towards your individual goals.



ENGLISH & MATHS

More and more businesses are insisting their employees have GCSEs in both English and maths at grade four or above and it is an essential part of university entry criteria too.

If you don't already have a grade four in English and maths when you arrive at Southport College, we will create a personalised study programme for you that will fit alongside the course you have chosen and will help you to achieve these vital qualifications. All you need to achieve and succeed is commitment and engagement.

Make English work for you

English at the College is very enjoyable and achieving a qualification in it gives you the best opportunity for a fantastic career.

Our caring and professional teachers are experts at supporting students to get the results they need. You also have access to a wealth of online resources and study mentors available in our English and Maths Study Hub.

What you will study

Your personalised study programme may include:

GCSE English Language

This is requested by most employers and is needed if you wish to progress to university. Our course will help you gain lots of transferable skills that will prove invaluable in the future.

Functional Skills English

Level 1

This is a stepping stone to Level 2 Functional Skills or GCSE and provides the building blocks of English such as sentence structure, punctuation, grammar and comprehension.

Level 2

An alternative to GCSE if future plans do not require this qualification. It refreshes topics such as sentence structure, punctuation and grammar but also provides knowledge of how to analyse and interpret meaning in text. You'll learn skills such as letter, report and article writing, essential for the workplace.

In addition, you are offered the opportunity to practise your presentation and listening skills in the Spoken Language endorsement. As effective communication is so important in a range of careers, this is a useful skill to develop.

Make maths work for you

Enjoy highly interesting and engaging lessons with dedicated maths teachers who are experts both in the subject and at supporting students. They deliver exciting lessons and additional support sessions where needed. They are here to fully prepare you for any exams and teach techniques in the classroom that reflect the exam papers.

What you will study

Your personalised study programme may include:

GCSE Maths

This is requested by most employers and required for entry into university, GCSE Maths is a fantastic qualification to help get you onto the career path you want.

We teach the latest syllabus which focuses more on mathematical thinking and problem solving. Some questions in exams are contextually set in the real world so we have an emphasis on using real life problems in the classroom and applying maths techniques to solve them.

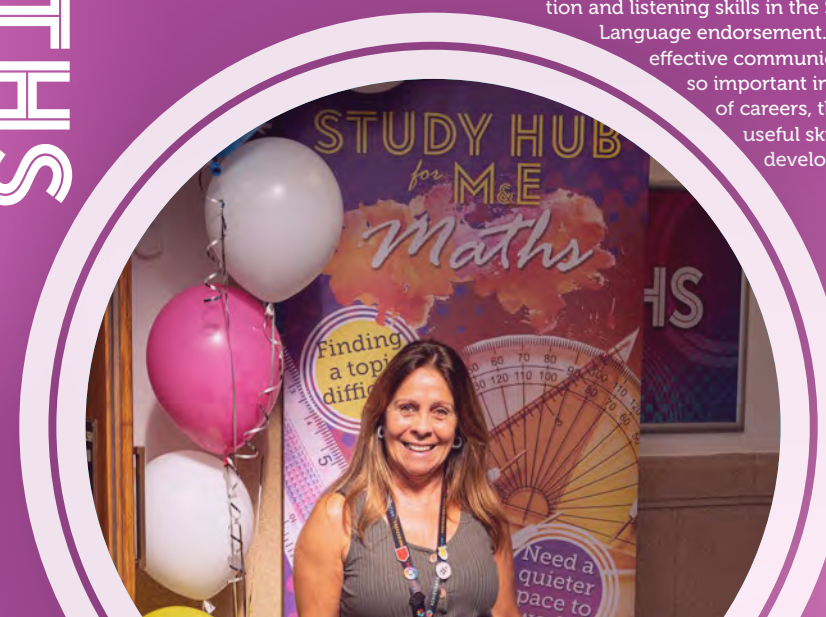
Functional Skills Maths

Level 1

If you are not yet at the level to study GCSE maths, we can offer Level 1 Functional Skills course to prepare you for taking maths GCSE, at a later stage. This includes building block topics such as practical numbers, problem solving and percentages.

Level 2

If your future plans do not require GCSE maths but do need a Level 2 in maths, this is for you! You will learn all about fractions, data, budgeting analysis and shape, all giving you confidence to apply maths effectively in real life.



Industry Links



Most of our courses include a valuable work placement, which is designed to give you hands on experience of the industry and confidence in the workplace.

Working relationships

We have close links with many employers in the region, both large and small. This is not only to ensure we are providing our students with the knowledge, attitude and transferable skills employers are looking for when developing their workforce, but through these links we can offer students Apprenticeships, guest speakers, live briefs, valuable work placements and much more.

Businesses we work with:

- + Adventure Coast
- + AMP EV
- + Army
- + BAE Systems
- + Biograd
- + Blackpool Pleasure Beach
- + Bryken
- + Dewalt
- + Dulux Paints
- + ECS Southport
- + Fletchers Solicitors
- + Gardiner & Theobald
- + Graham and Brown
- + Green Sefton
- + Hatters Digital Agency Ltd.
- + JARE Airline Training Partnership
- + Kids Planet Nurseries
- + Lattimers Engineering Ltd.
- + Liverpool Womens NHS Foundation
- + L'Oreal
- + MAC
- + Merseyside & West Lancashire NHS Trust
- + Merseyrail
- + Mikhail Hotel and Leisure Group
- + RAF
- + Royal Academy of Arts
- + Southport Flower Show
- + Sterling Material Handling
- + Tchedia
- + The Atkinson
- + The Vincent
- + Tower Heating
- + Truline CIS
- + Unite Legal Services

What is an Apprenticeship?

An Apprenticeship is a job with training and an alternative route into skilled employment. They are designed in partnership with employers to ensure employees gain the skill they need to do their job well.

How does an Apprenticeship work?

Apprenticeships are offered in over 1500 occupations and available to people over the age of 16. Apprentices work alongside experienced staff to gain knowledge, experience and ultimately a qualification in the area they wish to pursue a career in. Apprentices can be paid the National Minimum Apprenticeship Wage or the National Minimum Wage according to age but some Apprentices earn significantly more.

As part of the structured programme, Apprentices work towards qualifications by studying technical skills and carrying out practical assessments. Depending on your employer and their type of business you may receive training on a day-release basis, where you would attend college one day a week. However for some Apprenticeships, all training is delivered in the workplace.

Apprenticeships can be challenging as you will be working for an employer and training for your job role.

Our checklist will tell you if an Apprenticeship could be the route for you:

- + You must be over the age of 16
- + You must find a job in your chosen sector and have an interest in progressing in that job role
- + Your employer must be willing to offer you an Apprenticeship
- + You will need a good work ethic, excellent timekeeping and a professional approach

Apprenticeships



Welcome to Compete Apprenticeships.

We are looking forward to working with you on your Apprenticeship journey!

An Apprenticeship is a fantastic opportunity to gain the hands on experience and qualifications you need to succeed in your field and to earn whilst you learn!

As a Compete Apprentice, you'll have a real job with real pay, plus you will undertake a study programme that includes training for your specific job role and may also include maths and English.

Apprenticeships Training
Compete
BE PART OF A WINNING TEAM



How do I get an Apprenticeship?

Look for vacancies

Register with the National Apprenticeships Services www.gov.uk/apply-apprenticeship and view their current vacancies. If you are interested in any of the advertised vacancies you can apply through their website.

You can also view the Apprenticeship vacancies on the Southport College website. These are the vacancies where Southport College will deliver the training for those employers.

Approach employers

You can find your own Apprenticeship by approaching businesses with your CV and a Covering Letter.

Remember to choose businesses that you are interested in working for.

Join our talent pool

Once you've finished your GCSEs you can join the talent pool at Southport College. We may be able to match you with an Apprenticeship and an employer that suits you.

To join our talent pool send your CV and covering letter to: employer.partnerships@southport.ac.uk

Free travel passes

FIND YOUR LEVEL

We have courses available at all different levels and there is a level for everyone.

The right level for you will depend on the subject you choose and your GCSE results.

If you want to study a T Level or a BTEC Level 3 Extended Diploma, you will need to have achieved at least 5 GCSEs at grade 4 or above, including English or Maths.

Students who don't quite achieve those grades can opt for a Level 2 course (if you have 4 or more GCSEs at grade 3) or even a Level 1 (if you have 2 GCSEs at grade 2) and then work their way up accordingly.

Please be aware that certain skills based Level 3 courses require all students to start at Level 2 as you will need some subject specific underpinning knowledge to progress. This is clearly highlighted with the individual course entry requirements.

Students who are not yet ready for a Level 1 course, can join our tailor made Connect, Aspire or Engage programmes. Full details are on page 71.

Turn the page to discover our wide range of fantastic courses and start creating your career!



1

Level 1

Available in a wide range of subjects.

These one year courses are an introduction to your chosen subject. They're available in wide range of exciting vocational areas, enabling you to develop maths, English and employability skills.

When you have finished the course you will be ready for studying at Level 2, full-time work or an Apprenticeship.

For entry requirements, please see the individual course listings.

2

Level 2

One-year courses available in a wide range of subjects.

You will study your chosen subject in detail as well as put the theory into practice.

After you have completed the course you will have the option of progressing to Level 3, looking for full-time work or perhaps starting an Apprenticeship.

Entry requirements for this level vary from course to course; please see the individual course listings.

3

Level 3

These vocational qualifications take one or two years to complete depending on the subject.

Some will give you enough UCAS points to progress to university whilst others pave the way for Advanced or Higher Apprenticeships. They are all designed to give you the skills and experience businesses want.

Entry requirements for Level 3 Extended Diplomas vary by subject but require a minimum of 5 GCSE's at grade 4 including English & Maths; or successful completion of a relevant level 2 qualification and GCSE English or Maths at grade 4 & English or maths at grade 3.

To study a skills-based Level 3 course you need a Level 2 qualification in a vocationally related area.

T

T Levels

T Levels are exciting new Level 3 qualifications that are available in various subject areas.

They are equivalent to three A-Levels and focus on technical skills that can help students into skilled employment, university or apprenticeships.

They all include a substantial and highly valuable industry placement.

We are proud to have been selected to offer T Levels in five areas for 2026.

Additional entry requirements for T Levels vary by subject, so please see individual pages for details, but all require a minimum of 5 GCSE's at grade 4 or above including English and Maths; or successful completion of a relevant Level 2 qualification and GCSE English and maths at grade 4.



EARLY YEARS EDUCATION & CHILDCARE

T Level Early Years Education & Childcare		Two years
Minimum entry requirements Five GCSEs at grade 4 including English and maths. Plus a satisfactory DBS.		
Alternatively	Pass grade in a related Level 2 qualification and GCSE English and maths at grade 4 (or equivalent) and a satisfactory DBS.	

Prepare for a career as an Early Years Educator and gain enough UCAS points for university! If you're looking for experience in schools, nurseries, pre-schools, crèches and children's centres with the qualifications to back it up, our T Level is ideal. You will be learning in our fantastic fully equipped onsite nursery and early years classroom, where local pre school children are regular invited to come and join us giving you regular opportunities to put your theory into practice, getting hands on experience with children. You will learn about creating vibrant wall displays, planning engaging sessions and setting up stimulating activities. Integral to the T Level is a valuable work placement. You will complete a 750 hours of placement in a setting related to your early years career ambitions which forms part of your qualification, giving you a wealth of valuable experience. As well as the knowledge and skills you will need to work with children, this qualification gives you a full licence to practice, enabling you to be included in staff to child ratios.

Level 1 Caring Professions		One year
Minimum entry requirements 2 GCSEs at grade 2 and maths and English at grade 1.		
Alternatively	Completion of Aspire/Engage course (see page 71/72) and maths and English at grade 1.	

This is a great introduction to the industry, not only allowing you to develop your Healthcare and Childcare abilities, but also gives you essential employability skills too.

Whilst enjoying lots of childcare and health care sessions, you will also study maths and English and complete units to prepare you for the world of work including:

- Developing your interpersonal & teamwork skills
- Staying safe & healthy living
- Equality & diversity in the work place

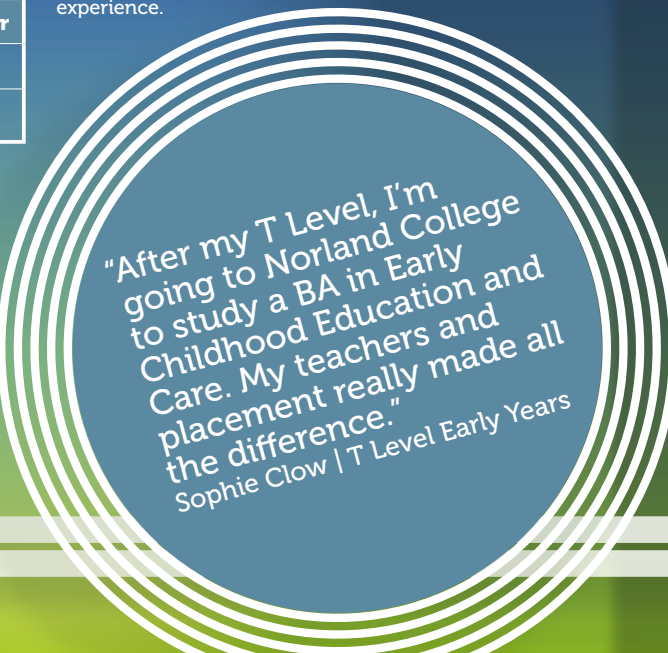
Level 2 Early Years		One year
Minimum entry requirements Grade 4 in GCSE English or maths and three GCSEs at grade 3 including English or maths. Plus a satisfactory DBS.		
Alternatively	Pass grade in Level 1 Caring Professions or a related Level 1 qualification and GCSE English or maths at grade 3.	

Become equipped with the knowledge, skills and competencies to work with children and young people within the age range of 0 to 11 years. This course is the perfect stepping-stone to a T Level, if you need to achieve grade 4 in GCSE English and/or maths.

Our fantastic in-house nursery and classrooms simulate the real early years workplaces you are training to work in. Children regularly visit from local childcare providers for you to complete planned activities with.

You will learn all about a range of subject areas covering all aspects of childcare, health and education. Key topics include communication, supporting positive behaviour, equality of opportunity and partnership working.

Alongside the course, you will undertake a substantial work placement, 2 days per week, working with children aged under seven in a school or nursery, giving you fabulous work experience to reference in your CV. There are also lots of trips and visits to enrich your learning experience.



"After my T Level, I'm going to Norland College to study a BA in Early Childhood Education and Care. My teachers and placement really made all the difference."
Sophie Clow | T Level Early Years



Creating Careers in Early Years Education

Find out about opportunities and salaries available to you.



DIGITAL SOFTWARE DEVELOPMENT

T Level Digital Software Development		Two years
Minimum entry requirements Five GCSEs at grade 4 including English and maths.		
Alternatively	Merit grade in a related Level 2 qualification and GCSE English and maths at grade 4 (or equivalent).	

Our T Level in Digital Software Development is the perfect starting point for your digital career! Created in collaboration with leading digital producers, designers, and developers, you'll learn from the best and become equipped with robust transferable digital skills that will help you succeed in the digital world.

You will spend 80% of your T Level learning in a classroom environment where you'll build a comprehensive toolkit of skills, knowledge, and experience that is highly valued by digital employers, leading to exciting job opportunities and university prospects.

For the remaining 20% of your programme, you'll get hands-on experience in a real-world setting through a 45-day industry placement, where you'll work on digital projects with a local employer. Together, we'll find the perfect placement that aligns with your interests and strengths in digital production, coding and web development.

Creating Careers in Digital Software Development

Find out about opportunities and salaries available to you.



TRAVEL & TOURISM



Creating Careers in Travel and Tourism

Find out about opportunities and salaries available to you.



Level 2 Step into Tourism		One year
Minimum entry requirements Four GCSEs at grade 3 including English or maths.		
Alternatively	Pass grade in a related Level 1 subject and grade 3 or above in maths and English.	

You will learn the key concepts of working in the Tourism environment using practical and realistic examples. Your friendly and supportive teachers are highly experienced in the travel industry and eager to pass their passion onto the next generation of people aspiring to high-flying careers in this exciting sector. Topics include the UK travel and tourism industry, customer service in travel and tourism, airports and airlines, travel destinations and lots more. There will also be educational visits and guest speakers to enhance your experience and bring your learning to life.

Level 3 Tourism Management & The Visitor Economy		Two years
Minimum entry requirements Five GCSEs at grade 4 including English or maths and GCSE English or maths at grade 3.		
Alternatively	Pass grade in a related Level 2 qualification and GCSE English or maths at grade 4 and GCSE English or maths at grade 3.	

For students wanting to learn about one of the UK's most dynamic industries, this is the course for you! You will gain knowledge, experience and skills directly applicable to a future career in Travel and Tourism. Exploring all sectors of the industry, you will be well prepared for working in a wide range of jobs and environments such as airlines and airports, travel agencies, conference and event centres, cruise ships, theme parks, tourist destinations and resorts, hotels and restaurants.

The course is a fantastic blend of theory and practical learning. Our classroom includes a mock fuselage with real airline seats and equipment. You will investigate the industry in depth, studying topics including the UK as a destination and its attractions as well as sustainable tourism. Students learn all about tour operations, resort reps, European and long-haul travel, event hospitality, conferences and exhibitions. There's also lots of trips and visits to enrich everything you learn with real experiences.

Level 1 Creative Industries	One year
Minimum entry requirements 2 GCSEs at grade 2 or above and maths and English at grade 1.	
Alternatively	Completion of Aspire/Engage course (see page 71/72) and maths and English at grade 1.

A great introduction to the creative industry, allowing you to develop your creative abilities, and essential employability skills too.

Study a variety of art skills, including drawing, painting and creating. There will be an exciting multi media project to work on and also a great photography module too.

Alongside this, you will also study maths and English and complete units preparing you for level 2 courses and the world of work including interpersonal & teamwork skills, staying safe & healthy living and equality & diversity in the work place.

Level 2 Art & Design	One year
Minimum entry requirements Four GCSE's at grade 3 including English and maths.	
Alternatively	Pass grade in Level 1 Creative Industries and GCSE Grade 3 in maths and English.

An absolutely fantastic introduction to a range of specialist areas in the field of visual arts and design. Your studies include an exciting range of techniques such as painting & drawing, photography, textiles, 3D design & crafts, fine art, printmaking, fashion and art history. Through practical, theory and research sessions, our teachers help students develop their skills and knowledge and upon completion, will have been provided with a good basis ready for study at Level 3.



Our art students have access to a whole range of unique printing equipment, including fantastic traditional printing presses.



Level 3 Art & Design	Two years
Minimum entry requirements Five GCSE's at grade 4 including English or maths and English or maths at grade 3. Plus a good portfolio.	
Alternatively	Level 2 qualification in related subject and GCSE English or maths at grade 4 and GCSE English or maths at grade 3 (or equivalent).

Become a well-rounded creative art student, exploring and developing a broad range of art and design specialisms, taught by teachers who also work in the industry as practising artists and designers. You will form your own specialist practice through experimentation and exploration, creating a strong portfolio of work that is displayed in an end of year public exhibition.

There is access to studio spaces, printmaking and textiles workshops, photography studios and state-of-the-art equipment. You are encouraged to engage with competitions, live briefs, community work, employer engagement and attend inspirational trips to places such as Liverpool, London and Berlin. Throughout the course, you'll be guided through your progression options with talks, university visits, meeting ex-students and support with UCAS applications from our experienced, supportive team.

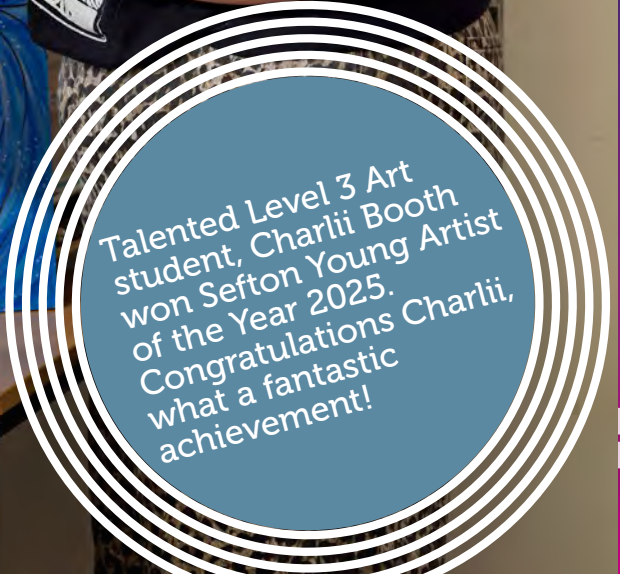
Level 4 Foundation Art & Design	One year
Minimum entry requirements Level 3 qualification in related subject and GCSE English and maths at grade 4. Plus a good portfolio.	

For students considering going onto an art-based degree, many universities prefer that they first complete a Foundation Diploma in Art and Design. This year long course bridges the gap from general college study to full-time art course at university. Whilst further continuing to explore and experiment with materials, techniques and processes, you will develop into an independent artist, transitioning from being assigned and directed to your projects to a position of a refined area of specialism.



Creating Careers in Art and Design

Find out about opportunities and salaries available to you.



Level 3 Graphic Design & Illustration		Two years
Minimum entry requirements Five GCSE's at grade 4 including English or maths and English or maths at grade 3. Plus a good portfolio.		
Alternatively	Level 2 qualification in related subject and GCSE English or maths at grade 4 and GCSE English or maths at grade 3 (or equivalent).	

In our Graphic Design studios, learn how to think logically and creatively to solve visual communication problems. Students have access to two digital suites with iMacs and high-performance PCs, a photography studio, plus a film and TV studio.

As well as computer-based design, students learn traditional materials, techniques and processes. Taught by professional designers, you will learn about branding, marketing, illustration, photography, layout, image manipulation, printmaking, typography, animation and more.

Previous students have undertaken short work placements in graphic design studios, advertising agencies, printers and architects. Local businesses offer design briefs, known as 'live projects' allowing students to create logos, branding and artwork for signage, posters and stickers, used in the real world, a fantastic addition to their portfolios.

The College has lots of great facilities; not just the iMacs but traditional print presses, silk-screening equipment and photography studios too.



GALLERY

Creating Careers in Art and Design

Find out about opportunities and salaries available to you.



GRAPHIC DESIGN
& ILLUSTRATION

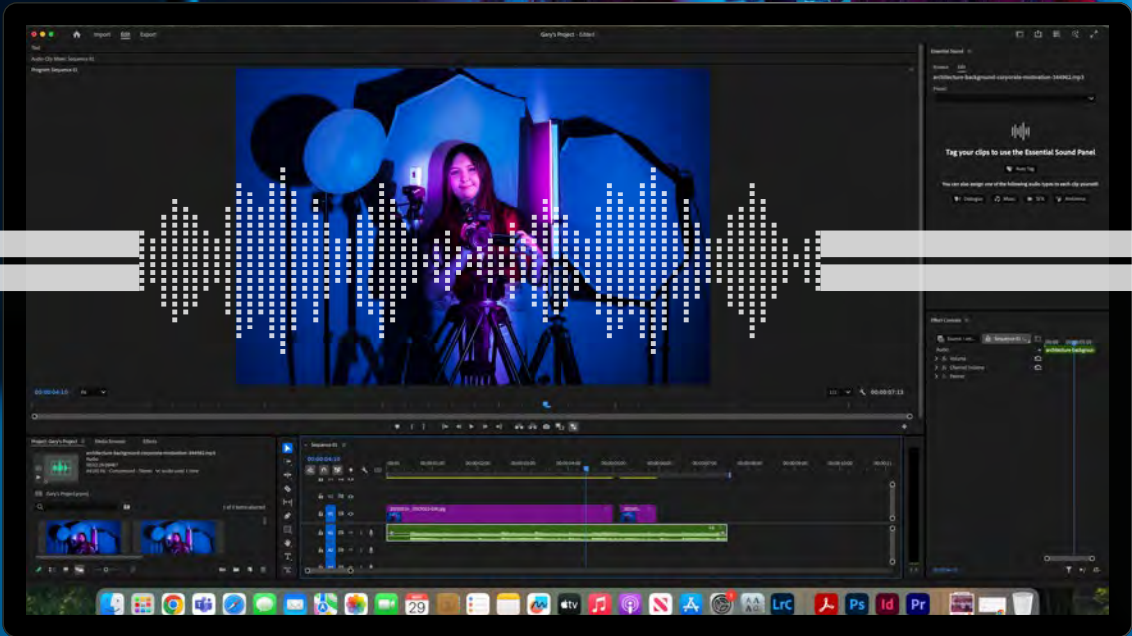


"The course includes lots of live briefs and inspiring projects. I created a completely new set of illustrations for this well known children's book."
Erin Cook | Level 3 Graphics



Creating Careers in Creative Media & Photography

Find out about opportunities and salaries available to you.



CREATIVE MEDIA & PHOTOGRAPHY

Our students have access to an amazing media centre, including a film and TV studio, photography studio, dark room and all the equipment needed to succeed.

There's modern DSLR and traditional film cameras, green screens, sound and video equipment, gimbals, stabilisers, lighting, tripods and so much more for you to use, enabling you to produce amazing static and moving imagery.

Level 1 Creative Industries	One year
Minimum entry requirements 2 GCSEs at grade 2 or above and maths and English at grade 1.	
Alternatively	Completion of Aspire/Engage course (see page 71/72) and maths and English at grade 1.

A great introduction to the creative industry, allowing you to develop your creative abilities, and essential employability skills too.

Study a variety of art skills, including drawing, painting and creating. There will be an exciting multi media project to work on and also a great photography module too.

Alongside this, you will also study maths and English and complete units preparing you for level 2 courses and the world of work including:

- Developing your interpersonal & teamwork skills
- Staying safe & healthy living
- Equality & diversity in the work place



Level 2 Creative Media	One year
Minimum entry requirements Four GCSEs at grade 3 including GCSE English and maths.	
Alternatively	Pass grade in Level 1 Creative Industries and GCSE Grade 3 in maths and English.

This exciting new course will enable you to start building the technical skills and knowledge relevant to industries in the media sector such as film, TV, audio and photography. Your teachers will introduce you to our media suite and equipment which includes PCs loaded with Adobe Creative Cloud, cameras, lighting equipment, photography studio, dark room and film and TV studio. They will help you to develop the research skills which underpin all media productions as well as gaining a basic understanding of employment opportunities, job requirements and working practices in the media sector.

Level 3 Creative Media Production & Photography	Two years
Minimum entry requirements Five GCSE's at grade 4 including English or maths and English or maths at grade 3.	
Alternatively	Pass grade in a related Level 2 qualification and GCSE English or maths at grade 4 and GCSE English or maths at grade 3 (or equivalent).

This course will give you sound technical & aesthetic knowledge in both film making and photography. Assignments are chosen to reflect the diverse roles in the industry, with a wide range of exciting film and photography projects across the 2 years including:

- 35mm Film Photography
- Digital Photography: Landscape, Fashion, Light Trails, Portrait, Street Photography, Social Documentary and more...
- Film Making & Editing: Music Video, Drama, Documentary, E-commerce and News Production and more...
- Multi-media campaign

Plus, at the end of each year, you will undertake a 10 week final major project, allowing you to express your create talents with a photo or media showpiece of your choice.

You will also have opportunities to take part in competitions and live briefs. Together, all of this will enable you to grow as a person, develop advanced technical skills and a strong portfolio.



ELECTRICAL

Level 1 Electrical Installation	One year
Minimum entry requirements Two GCSEs at grade 2, plus GCSE maths at grade 3.	
Alternatively	Pass grade in Aspire/Engage (see page 71/72), plus GCSE maths at grade 3.

Electricians install, maintain, and repair electrical machinery, appliances and wiring and it requires several years to become a fully certified. We have been providing the pathway into this well-paid industry for years and many students who didn't meet the Level 2 entry requirements, started learning the basics at Level 1, achieved grade 4 in GCSE maths, then successfully worked their way up.

Level 2 Electrical Installation	One year
Minimum entry requirements Three GCSEs at grade 3, plus GCSE maths at grade 4.	
Alternatively	Pass grade in a related Level 1 qualification and GCSE maths at grade 4.

The Level 2 course provides the basic skills and experience needed to progress to an electrical career and will quickly develop your skills and competence in domestic, commercial and industrial electrical installation. You'll learn in well-equipped workshops and be taught by experienced, time-served electricians. There is practical and theory-based learning, including the principles of electrical science, installation of wiring systems and enclosures and electrical installations technology.

Level 3 Electrical Installation	One year
Minimum entry requirements Completion of Level 2 Electrical Installation.	

A vital step in becoming an Electrician or Electrical Engineer, our industry expert teachers will teach you the practical and theory, including science & principles, design, construction and testing of systems, repairing electrical faults, and working safely. Plus, our workshops are thoroughly equipped with industry standard systems and equipment.

Upon completion you will achieve a technical certificate. To become a fully qualified electrician you would then need to complete a Level 3 Apprenticeship to achieve the necessary experience for the competency element.



ENGINEERING

Level 2 Engineering	One year
Minimum entry requirements Four GCSEs at grade 3 including English, maths and science.	
Alternatively	Pass grade in a related Level 1 course and grade 3 in GCSE English and maths.

This practical and theory-based course will give you a good understanding of general engineering principles. You will study all areas including Machining, Electronics and Computer Aided Design (CAD), with lots of hands on experience using industry standard machining, lathes, milling machines and lots more. It is the first step towards an Engineering Apprenticeship or an alternative route to our T Level in Engineering.

T Level Design & Development in Engineering	Two years
Minimum entry requirements Four GCSEs at grade 4 including English and science, plus grade 5 in GCSE maths.	
Alternatively	Completion of the Level 2 qualification and grade 5 in GCSE maths and 4 in GCSE English.

T Level in design engineering will give you the theoretical and vocational skills as well as the underpinning knowledge to succeed. You will also benefit from a 45 day, extended work placement in the sector. The course covers 17 core themes of engineering and prepares you for entry into many different areas at university or advanced apprenticeships which could include mechanical, electronic, automotive or aeronautical engineering. You will study exciting projects in modules such as mechanical principles, mechatronics, engineering science, plus practical elements in our state-of-the-art workshops. In preparation for future careers, you will also study business, commercial & financial awareness and project management.

Creating Careers in Engineering

Find out about opportunities and salaries available to you.



New architectural equipment

Working with industry employers, we are always looking at what new equipment our students need to be using to be fully prepared for the architectural, design and surveying industry.

We have recently invested £80,000 in high quality equipment and are really proud of the range of specialist resources you will be using throughout your studies, including:

- **5KN Tensile strength Machine**
- **Autodesk® AutoCAD**
- **Autodesk® Revit**
- **Leica DD120 Cable Locator**
- **Leica DISTO S910 Laser Distance Pro Package**
- **Leica iCON iCB50 Total Stations Oculus Quest 2 128GB All-in-One VR Headsets**
- **Phantom 4 Pro V2.0 Surveying Drone**
- **PIX4Dmapper (The leading photogrammetry software for professional drone mapping)**
- **Ultimaker S3 3D Printers**

Our Pennington Centre for Construction has recently undergone a fantastic refurbishment, to give you amazing facilities and an unrivalled learning experience.

T Level Design, Surveying & Planning for Construction		Two years
Minimum entry requirements Five GCSEs at grade 4 including English, maths and science.		
Alternatively	Completion of a related Level 2 qualification and grade 4 in GCSE English and maths.	

Completing a T Level in Construction will open many doors for you. Most students who complete the course will choose to progress to university and then into fantastic careers as Architects, Surveyors, Building Services Engineers and Civil Engineers.

You will spend 80% of time in college, learning the theory and practical skills involved in the design of structures, starting with the most basic out-buildings to huge skyscrapers and suspension bridges. You will have access to industry standard tools and equipment such as theodolites, tensile strength machines and surveying drones. You will study units including Construction Surveying/ Principles/Design/Tech, Tendering & Estimating, Project Management, Building Regulations, Graphical Detailing, Hot Water Systems, Measuring Techniques Health & Safety and much more.

The other 20% of the time will be spent on an industry placement putting all this into action (minimum of 315 hours on placement).

Creating Careers in Design, Surveying and Planning

Find out about
opportunities and
salaries available
to you.



CONSTRUCTION MULTI-SKILLS



Level 1 Construction Multi-Skills		One year
Minimum entry requirements 2 GCSEs at grade 2 or above and maths and English at grade 1.		
Alternatively	Completion of Aspire/Engage course (see page 71/72) and maths and English at grade 1.	

This is a great introduction to the construction multi-skills industry, not only allowing you to develop your construction talents, but also giving you essential employability skills too.

Whilst enjoying lots of practical plastering, joinery, bricklaying and painting & decorating sessions, you will also study maths and English and complete units to prepare you for the world of work including:

- Developing your interpersonal & teamwork skills
- Staying safe & healthy living
- Equality & diversity in the work place

Level 2 Construction Multi-Skills		One Year
Minimum entry requirements Four GCSEs at grade 3 including English or maths.		
Alternatively	Pass grade in a related Level 1 qualification and a satisfactory College assessment in English and maths.	

This is an excellent route into the many construction industries, giving you a focused taste of four of the main trade occupations. Throughout this practical, hands-on course, you will study Bricklaying, Carpentry & Joinery, Painting & Decorating and Plastering including the underpinning theory behind the materials, techniques and processes involved. Students will be taught to hone their skills by expert teachers, in our fantastically well-equipped workshops, fitted with the latest tools, machinery and materials, as used in industry.

Upon completion you will then be able to choose one of the specific trade pathways and move onto a Level 2 course in one of these fields. You will then study that trade in-depth and become equipped with the essential knowledge and skills to become ready for employment in industry.

Level 1 Bricklaying		One year
Minimum entry requirements Three GCSEs at grade 2		
Alternatively	Pass grade in Aspire/Engage (see page 71/72)	

Careers in construction require excellent technical skills which are built from the ground up. Level 1 Bricklaying forms the foundations, establishing your skills and knowledge of brickwork to an introductory level. You will start to develop and understand the basic techniques required to work in the industry and successful completion forms the entry requirements for Level 2 where you will develop more advanced skills.

This is a great introductory course for hands-on learners, with a heavy focus on practical learning. You will practice a range of different bricklaying techniques including building solid walling, isolated and attached piers, cavity walling and forming masonry structures. This is underpinned with the theory, where you will study building methods, construction technology and interpreting working drawings.

Level 2 Bricklaying		One year
Minimum entry requirements Four GCSEs at grade 3 including GCSE English and maths		
Alternatively	Pass grade in a related Level 1 qualification	

For those serious about a career in bricklaying, advancing to Level 2 will develop your skills and knowledge in brickwork to an intermediate level, making you ready for employment. Taking the techniques and skills gained at Level 1, you will study at a greater depth and with a balanced mixture of both practical and theory-based learning. In bright, modern classrooms you will be inspired and supported by highly experienced lecturers and in our huge, indoor bricklaying workshop, you'll be able to refine your bricklaying skills in a dry and controlled environment.



BRICKLAYING

**Creating
Careers in
Construction**

Find out about
opportunities and
salaries available
to you.






Level 1 Plumbing		One year
Minimum entry requirements Three GCSEs at grade 2.		
Alternatively	Pass grade in Aspire/Engage (see page 71/72).	

Students who wish to study to become a plumber or gas engineer but don't meet the Level 2 entry requirements have the opportunity to study Level 1 Plumbing. This qualification will provide them with the underpinning knowledge, skills and qualifications needed to enrol onto the intermediate Level 2 course.

Level 1 gives students a footing onto the Level 2 course, which is the pathway to either Level 3 Plumbing or a Gas Installation Apprenticeship, all necessary in the journey to becoming fully qualified in either industry.

Creating Careers in Plumbing

Find out about opportunities and salaries available to you.





Level 2 Plumbing & Heating		One year
Minimum entry requirements Four GCSEs at Grade 3 including English, maths & science.		
Alternatively	Pass grade in a related Level 1 qualification and grade 3 in English and maths.	

This Level 2 course is a fantastic stepping-stone to the qualifications you need. Whether you want to focus on the plumbing route, installing and repairing water piping, drainage and appliances or you want to become a Gas Engineer, working with gas-fired appliances and heating systems; this course will prepare you for study at Level 3.

The course gives students the basic skills and knowledge needed in either industry, studying units such as plumbing science, hot & cold water systems, sanitation and drainage, central heating and electrical systems.

Upon completion, students can choose to progress onto Level 3 Plumbing or a Level 3 Gas Installation Apprenticeship, fully equipping them with the advanced knowledge and skills needed.

Level 3 Plumbing & Heating		One year
Minimum entry requirements Completion of Level 2 Plumbing and Heating and grade 4 in GCSE English & maths.		

This course is an essential step to becoming a fully qualified plumber, with all the skills and knowledge to work in the industry. There is a great mix of theory-based and practical learning in our bright, modern classrooms and class-leading workshops. Our expansive training facilities are second to none, where all aspects of plumbing can be practiced in fantastic workshops. You will learn the necessary skills to install plumbing infrastructure, equipment and appliances. Teachers take great pride in ensuring students' skills are refined to a very high standard. You will become fully trained on all the installation tools and materials needed in this highly skilled trade.

This fantastic course ensures students are provided with the knowledge, experience and qualification to start an exciting new career.

Our students gain strong practical skills, training in our amazing plumbing workshops, packed with industry standard equipment.

CARPENTRY & JOINERY



Level 1 Carpentry & Joinery	One year
Minimum entry requirements Three GCSEs at grade 2.	
Alternatively	Pass grade in Aspire/Engage (see page 71/72).

For people who are creative and find the best way to learn is through practical tasks, studying Carpentry and Joinery is an excellent route into a life-long career. Level 1 is an excellent introduction to woodworking skills, starting with the basic crafting techniques when working with solid hardwoods, softwoods, and board materials. As well as the practical skills, you will study the maths, terminology and theory needed for using specialist tools used in measuring, cutting and jointing timber to size.

Level 2 Carpentry & Joinery	One year
Minimum entry requirements Four GCSEs at grade 3 including English and maths.	
Alternatively	Pass grade in a related Level 1 qualification.

Advancing to Level 2 you will be studying in our brand-new Carpentry and Joinery workshops equipped with everything from the latest machinery and tools to the most basic measuring devices used in leading professional workshops and building sites. This ensures you are prepared for employment in woodworking industries from property construction to product manufacturing.

Level 3 Carpentry & Joinery	One year
Minimum entry requirements Pass grade in Level 2 Carpentry & Joinery and GCSE English or maths at grade 4 and GCSE English or maths at grade 3.	

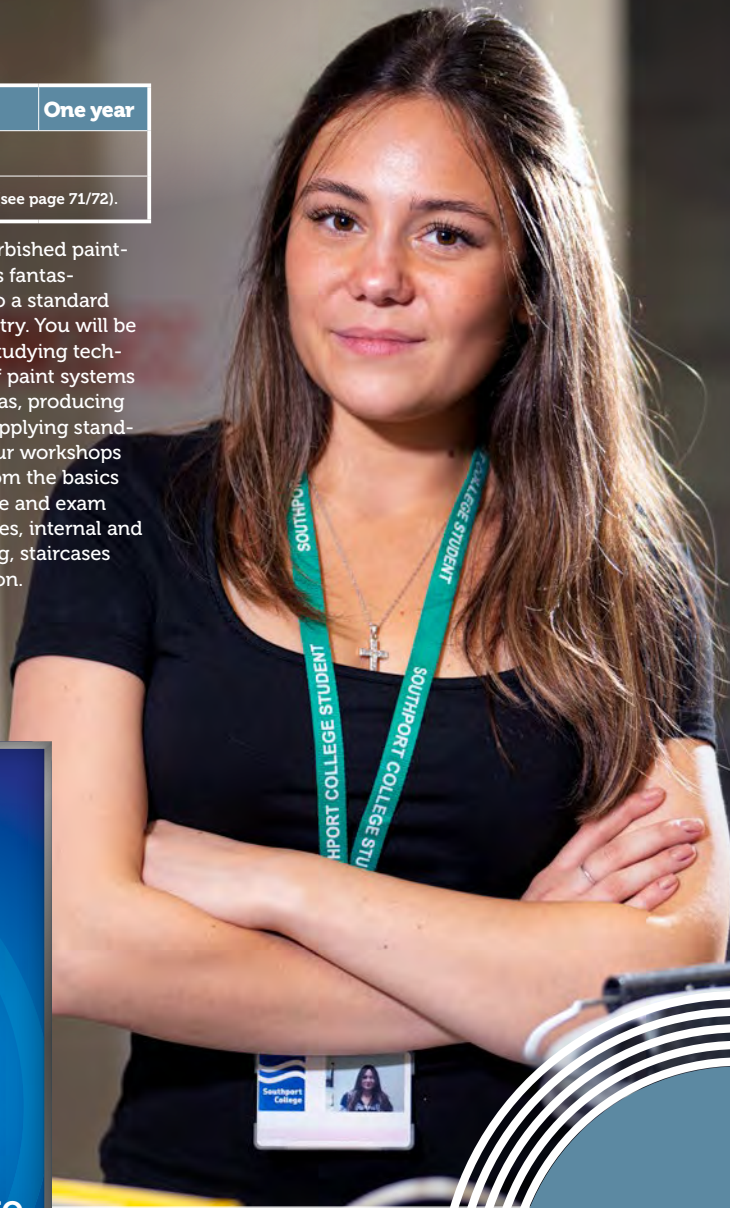
Level 3 provides the highest qualification in carpentry & joinery available at Southport College. Over the duration of this fantastic one year course, you'll gain, practice and refine technical woodworking skills to a highly professional standard. Your teachers are experts in the industry and are keen to impart their years of experience, skills and knowledge onto their students, ensuring that when you leave us, you are very well prepared for your future career.

You may progress straight into an exciting new career or further in-depth study and work experience by undertaking an Apprenticeship.

PAINTING & DECORATING

Level 1 Painting & Decorating	One year
Minimum entry requirements Three GCSEs at grade 2.	
Alternatively	Pass grade in Aspire/Engage (see page 71/72).

Taught in our amazing, newly refurbished painting and decorating workshops, this fantastic course will prepare your skills to a standard ready for employment in the industry. You will be taught by industry professionals, studying techniques including the application of paint systems by brush and roller to complex areas, producing specialist decorative finishes and applying standard papers to ceilings and walls. Our workshops are designed to build your skills from the basics to more complex jobs, with practise and exam booths which have window recesses, internal and external corners, architrave, skirting, staircases and balustrades ready for decoration.



Creating
Careers in
Painting &
Decorating
Carpentry &
Joinery

Find out about
opportunities and
salaries available to
you.



We have brand new
carpentry & joinery
workshops, full of high
quality, industry
standard equipment.

MOTOR VEHICLE ENGINEERING



Our motor vehicle workshops are fully kitted out with a fleet of cars, diagnostic equipment, top tools, lifting equipment and much more.

Studying Motor Vehicle Engineering at Southport College means you will learn in fantastic automotive workshops that are just like the real thing. They are fitted out with the latest industry equipment, including ramps, wheel balancers, pneumatic tools and high-tech diagnostic kits.

The courses are a blend of theory and practical sessions, which will give you underpinning knowledge and technical skills. Practical sessions are overseen by our industry expert, qualified teachers and technicians. Plus, the theory is taught in a classroom with a glass partition to the workshops meaning whatever session you are doing, you are always fully immersed in the industry environment. There is a diverse fleet of real cars for students to work on. This means that you are familiar with using industry standard equipment and prepared for the workplace with the skills and hands-on experience professional garages need their motor vehicle engineers to have.

Level 1 Light Vehicle Maintenance		One year
Minimum entry requirements Three GCSEs at grade 2 including English and maths.		
Alternatively	Pass grade in Aspire/Engage (see page 71/72) and GCSE English and maths at grade 2 (or equivalent).	

Quality training and experience is important for anyone wanting to work in the motor industry. Our Level 1 course introduces students to the basics of vehicle maintenance and repair work, through a varied programme of both practical workshop sessions and theory-based sessions. It allows students to gain the entry requirements for the Level 2 programme, whilst working towards achieving any GCSE English and/or maths qualifications required. Students build vocational skills over the course of the year, increasing their knowledge in vital areas and components. You will study the theory and practical aspects of lubrication systems, cooling systems, fuel & air systems, electrical systems, transmission systems, spark ignition systems, steering & suspension systems, wheels & tyres and brake systems.

Creating Careers in Motor Vehicle Engineering

Find out about opportunities and salaries available to you.



Level 2 Vehicle Maintenance & Repair		One year
Minimum entry requirements Four GCSEs at grade 3 including GCSE English and maths.		
Alternatively	Pass grade in a related Level 1 qualification and GCSE English and maths at grade 3 (or equivalent).	

Our Level 2 course will train you to the standards required by employers in the vehicle maintenance and repair industry. Covering a diverse range of essential industry techniques, students will study units including brakes and tyres, removing and replacing chassis units and components. You'll also study ancillary topics such pre and post vehicle inspections, good workplace housekeeping, maintaining positive relationships and health and safety. There is lots of practical work, alongside learning the theory. So not only do you learn 'how' to do something but you are able understand and be able to explain the 'why' behind it too!

Level 3 Vehicle Maintenance & Repair		One year
Minimum entry requirements Pass grade in Level 2 Vehicle Maintenance & Repair and GCSE English or maths at grade 4 and GCSE English or maths at grade 3.		

This advanced qualification is designed to meet the skill needs of motor vehicle technicians in the automotive vehicle maintenance and repair sector to a higher level. Building on the knowledge and skills gained at Level 2, students move onto higher levels of technical knowledge and ability by studying units including the diagnosis and rectification of: light vehicle chassis system faults, auxiliary electrical components, engine and component faults and light vehicle transmission and driveline faults. Upon completion, you will be able to competently inspect light vehicles, diagnose and rectify issues. You will be able to confidently explain your diagnosis of issues and the remedial actions required, with the thorough understanding of the underpinning theory you gain.



Get fantastic practical experience in our Clinical Skills Hub; with mock hospital wards and a wide range of industry-standard medical equipment.

HEALTHCARE & HEALTH SCIENCE

T Level Healthcare	Two years
Minimum entry requirements Five GCSEs at grade 4 including English, maths and science, plus a satisfactory DBS.	
Alternatively	Pass grade in a related Level 2 qualification and GCSE English or maths at grade 4 (or equivalent) and a satisfactory DBS.

T Level Healthcare is a fantastic preparation for the NHS, medical and social work environments. It includes a minimum of 315 hours of valuable work placement, in varied settings, where you aspire to work. Using excellent links with Southport & Ormskirk Hospitals and other local healthcare providers, we can help find you a suitable placement.

In college, you'll be based in our Clinical Skills Hub; brand-new, state-of-the-art simulation hospital wards, part of a £2.3m funding from the Department for Education's T-Level Capital Project.

Industry expert teachers deliver a diverse range of engaging course content. In the second year of the course, you will study an occupational specialism called 'Supporting the Adult Nursing Team', which supports a diverse range of career options.

We also invite guest speakers throughout the course, including ex-students, giving you additional insights into many aspects of the healthcare sector.

Creating Careers in Healthcare & Health Science

Find out about opportunities and salaries available to you.



Level 2 Health & Social Care	One year
Minimum entry requirements Four GCSEs at grade 3 including English and maths.	
Alternatively	Pass grade in Level 1 Caring Professions and GCSE grade 3 in English and maths.

This course is designed to provide you with experience and an insight into the health and social care sector. If you want to study T Level Healthcare or related Level 3 course, this is the perfect stepping-stone for you allowing you to gain the entry requirements.

You will cover a range of topics including communication and ensuring safe environments in health and social care. The impact of diet on health, care values and improving health and wellbeing. You'll also gain vocational experience by taking part in a valuable placement in a relevant health and social care setting.

Level 1 Caring Professions	One year
Minimum entry requirements 2 GCSEs at grade 2 and maths and English at grade 1.	
Alternatively	Completion of Aspire/Engage course (see page 71/72) and maths and English at grade 1.

This is a great introduction to the industry, not only allowing you to develop your Healthcare and Childcare abilities, but also gives you essential employability skills too.

Whilst enjoying lots of childcare and health care sessions, you will also study maths and English and complete units to prepare you for Level 2 courses and the world of work including:

- Developing your interpersonal & teamwork skills
- Staying safe & healthy living
- Equality & diversity in the work place

BEAUTY

Level 2 Beauty Therapy		One year
Minimum entry requirements Four GCSEs at grade 3 including English and maths.		
Alternatively	Pass grade in Level 1 Hair & Beauty and GCSE grade 3 in English and maths.	

You will develop competent skills in a host of beauty treatments, including facial skin care, eyebrows and lash tinting, waxing, manicures, pedicures and make up application as well as learning about salon reception duties and customer service.

On successful completion you can progress to a Level 3 Beauty Diploma or start work as a junior therapist in a variety of different settings.

Level 1 Hair & Beauty		One year
Minimum Entry Requirements 2 GCSEs at grade 2 or above and maths and English at grade 1.		
Alternatively	Completion of Aspire/Engage course (see page 71/72) and maths and English at grade 1.	

This is a great introduction to the industry, not only allowing you to develop your creative abilities, but also gives you essential employability skills too.

Whilst enjoying lots of practical hair and beauty sessions, you will also study maths and English and complete units to prepare you for Level 2 courses and the world of work including:

- Developing your interpersonal, customer service and teamwork skills
- Staying safe & healthy living
- Equality & diversity in the work place

Level 3 Beauty Therapy	One year
<p>Minimum entry requirements</p> <p>Pass grade in Level 2 Beauty Therapy and GCSE English or maths at grade 4 and English or maths at grade 3.</p>	

This Level 3 Diploma will prepare you for employment as an advanced beauty therapist, with the knowledge, understanding and skills to work competently. You will become proficient in body massage using pre-blended aromatherapy oils, stone therapy massage, facial and body electrotherapy treatments. You will also learn about safety control and how to plan promotional activities.

Alongside the course, you will also undertake a work placement in the beauty industry.

Successful completion could see you working as a beauty therapist in a salon, spa, cruise ship or even running your own business and it also opens up opportunities for lots of Level 4 qualifications too, including skin rejuvenation, physiology for advanced beauty therapy or Laser and Intense Pulsed Light.

HAIRDRESSING

Working with real clients means no two days are the same. Enjoy a wide range of experiences and learn many new techniques.

Creating Careers in Hair and Beauty

Find out about opportunities and salaries available to you.



Level 2 Hairdressing	One year
Minimum entry requirements Four GCSEs at grade 3 including GCSE English and maths.	
Alternatively	Pass grade in Level 1 Hair & Beauty and GCSE grade 3 in English and maths.

This VTCT level 2 Diploma in Women's Hairdressing has been specifically designed to develop your practical skills in the art of cutting or dressing women's hair, providing effective shampooing and conditioning services, skills in colouring and lightening hair and providing a good consultation for your clients.

Underpinning this qualification you will develop a sound knowledge and understanding of each unit including health and safety and working in the hairdressing industry. You will develop your practical skills to a high level of occupational ability so you can perform your own salon services. On successful completion, you will have the opportunity to progress to the following VTCT qualifications; Level 2 Diploma in Barbering, Level 3 Diploma in Women's Hairdressing or Level 3 Advanced Hairdressing Apprenticeship.

Level 3 Hairdressing	One year
<p>Minimum entry requirements</p> <p>Pass in Level 2 Hairdressing and GCSE English or maths at grade 4 and English or maths at grade 3.</p>	

Upon completion of Level 2, you can progress to the VTCT Level 3 Diploma in Women's Hairdressing. This has been specifically designed to develop your practical skills to an advanced level through a variety of techniques. Units include the creative art of cutting hair, the artistic skill of colouring, imaginative dexterity of styling and dressing hair, and how to provide effective consultation support for colleagues.

Alongside the course, you will be required to undertake a hairdressing work placement.

On completion, you could progress on to related qualifications, including Level 2 Barbering, Preventing Contact Dermatitis or a Level 3 Award in Bridal Hairstyling. You may progress into employment in the hairdressing industry as a senior hairdresser, salon manager or work as an independent hairdresser, on cruise ships, freelance or with your own salon.


HOSPITALITY

Level 1 Hospitality - Introduction to the Industry	One year
Minimum entry requirements Three GCSEs at grade 2.	
Alternatively	Pass grade in Aspire/Engage (see page 71/72).

This course will help you to gain the practical skills needed to work in the hospitality industry. You will be working in Clouds, our professional kitchen and restaurant, which is open to the public. Discover a range of exciting topics including basic food preparation & cooking, preparing & serving drinks, customer service and health and safety. A wide variety of teaching methods are used and you will cover English, maths and personal skills too. After successfully completing this qualification you could progress to a Level 2 in Professional Food & Beverage Service, Level 1 Professional Chef, or perhaps start an Apprenticeship in the industry.

Creating Careers in Hospitality

Find out about
opportunities and
salaries available
to you.



Level 2 Hospitality - Food & Beverage Service	One year
Minimum entry requirements Four GCSEs at grade 3.	
Alternatively	Pass grade in a related Level 1 qualification.

This course is ideal if you want a career in the hospitality industry and covers a wide range of interesting topics, including food & bar service, beverage product knowledge, menu creation, handling payments & bookings, customer service, health & safety and workplace skills. You will be based in our fantastic Clouds Restaurant, working with real paying customers and will develop the skills to always deliver a great dining experience. Your programme will also include maths, English, practical and teamwork skills. Successful completion will allow you to progress on to Level 3 Diploma in Food and Beverage Supervision or alternatively you could use your qualification to start work within the industry.

Level 3 Hospitality - Supervision & Principles	One year
Minimum entry requirements Pass grade in Level 2 Hospitality.	

On this course, you will develop your front of house and leadership skills to enable you to work at a supervisor level in the hospitality industry. This is a progression route from Level 2 and is based in our fantastic Clouds Restaurant, working with real customers. You will gain the skills to oversee running a restaurant, as well as pairing wines, creating cocktails and being a Barista. You will study a wide variety of modules including planning & supervising service operations, preparing and serving drinks and supervising hospitality events. After successfully completing the course, you will have the skills needed for a range of career opportunities including Restaurant Supervisor, Bar Manager, Sommelier, Event Manager or Trainee Banqueting Manager.

"Having progressed through Hospitality and Professional Chef courses, I'm excited about a career running my own bar and restaurant."
Tyler Lydiate



PROFESSIONAL
CHEF

Level 1 Professional Chef	One year
Minimum entry requirements Three GCSEs at grade 2.	
Alternatively	Pass grade in Aspire/Engage (see page 71/72).

This course is aimed at those who want to pursue a career as a professional chef or in the hospitality industry and will develop your general culinary skills as well as covering areas such as food safety, menu development, healthy eating, baking and patisserie. You will be based in Clouds, our fantastic professional kitchen and restaurant, and will gain a broad understanding of the industry and well as getting lots of hands-on practical experience and enjoying demonstrations from visiting professional chefs. Maths and English will also form part of your programme. Successfully completing the course will enable you to progress to Level 2 Professional Chef.

Creating
Careers for
Professional
Chefs

Find out about
opportunities and
salaries available
to you.



Level 2 Professional Chef	One year
Minimum entry requirements Four GCSEs at grade 3.	
Alternatively	Pass grade in a related Level 1 qualification.

This exciting course covers both the practical and theory sides of becoming a professional chef and will give you the skills you need to progress in the fast moving industry. You will be based in our professional kitchen and restaurant, Clouds, using industry standard equipment and preparing food for real paying customers. The course covers a range of topics, including how to prepare meat, poultry, vegetables and pulses and how to cook sauces, soups and stocks, as well as food safety, special diets, kitchen operations and menu planning. On successful completion of this course you could move directly into employment, or you may choose to progress to Level 3 and develop more specialist skills.

Level 3 Professional Chef	One year
Minimum entry requirements Pass grade in Level 2 Professional Chef.	

This Level 3 Professional Chef Diploma will give you the skills you need for complex or advanced food preparation and cooking. It covers a variety of high level modules including preparing, cooking and finishing complex meat, fish, poultry and vegetable dishes, hot and cold sauces and dressings. You will also develop the skills to run a kitchen and a section; guide, monitor and delegate to the Level 1 and 2 students and create and plan complex and high level menus. After successful completion of the course you will be well prepared to start work in the industry or you may wish to progress into higher education.



The professional
kitchens are amazing
and teachers hold
really high standards.
Clouds Restaurant is
really popular and it is
so rewarding when
customers are
enjoying our food.



We have a fantastic range of entry level courses, tailor made to suit your individual needs. Our friendly team of teachers are specialists in this area and will provide you with outstanding support!

FOUNDATION LEARNING

CONNECT	ASPIRE	ENGAGE
A one year programme for learners ready to start Entry Level 2.	A one year programme for learners ready to start Entry Level 3.	A flexible programme providing an alternative for learners ready to start Entry Level 3.
Upon completion, you will be ready to progress to an Entry Level 3 course.	Upon completion, you will be ready to progress to a Level 1 course.	Helping you build the potential to progress to Level 1

Our one year Connect Course is for learners looking to work towards an Entry Level 2 qualification.

It is tailored to students' individual needs and focuses on the transition to College from school, and prepares you for the next steps.

What you will study

Students focus on building essential life skills such as time management, organisational skills, staying healthy and developing positive relationships. You learn independent travel skills, basic cookery and take part in fun confidence building activities.

Get involved in great opportunities to gain hands-on experience in customer service, teamwork and creative idea generation. You will also develop your English and maths and have a dedicated Progress Tutor.

This qualification prepares you for progressing to the next level; our fantastic Aspire course.

Confidence and skills for you

Why you should choose Southport College

There is dedicated classroom space for the Connect courses, with specialist resources and equipment including a life-skills facility and sensory room.

Our fantastic life-skills facility is kitted out with all the utilities and technology found in a modern home, giving students the perfect environment to gain independent living skills. We regularly review our courses in line with Government curriculum initiatives.

We offer extensive support both in groups and one-to-one, as well as lunchtime and break supervision. We have a Learning Support Hub in College for students to enjoy some quiet time during break and lunchtimes.

The College has been delivering courses for young people with Learning Difficulties or Disabilities (LDD) for many years.

Starting college can be a very daunting experience for many students on our Connect courses, so we take great care in ensuring that the transition from school to college goes as smoothly as possible.

We offer group and individual orientation visits and taster days before students come to College and these visits help to introduce students to the College at their own pace and are tailor-made to suit them.

By offering the support and guidance needed to help them to succeed, we ensure many of our students who start on our Connect courses progress through College to higher level courses and on to employment.



Brand New Sensory Room

Students can enjoy our calming multi-sensory space.



ASPIRE

The Aspire Course is for learners who are working towards Entry Level 3 and forms part of the Extended Certificate in Further Learning and Employment.

It has been designed to help you progress towards the world of work, whilst at the same time helping you become a more independent mature young adult both in learning and life.

The course has three key elements:

Preparing for adulthood

This includes independent living skills; health and fitness; budgeting and communication.

English and maths

Classes to help you achieve these important qualifications.

Future Skills

Preparing you for your future employability and digital skills, as well as personal development.

You may also get a flavour of the wider range of vocational courses at the College, through subject tasters in areas you're interested in.

This will build your skills and help decide what you might like to study in more detail the following year.

Helping you to progress

The Aspire course is designed to help students progress towards the world of work and/or Level 1 vocational courses at the College. Aspire is a fantastic option for Entry Level learners.

You will find out all about our wide range of vocational subjects before focusing on and progressing in one area.

You will also be working towards gaining English or maths qualifications.

Why you should choose Southport College

We have fantastic facilities for all our college students and our Aspire facilities are second to none! There is dedicated classroom space and specialist resources and equipment; as well as realistic working environments and a large well equipped sports hall and gym. What's more, we have a life skills area, complete with all the facilities and utilities in a modern home; brilliant for improving your cooking and independent living skills.

All our teachers are friendly, supportive and very welcoming. They are all experienced and want you to achieve your very best. They are here to help you every step of the way.

What you will study

These range from year to year depending on the interests of the students but may include:

• Life skills

Independent living skills; health and fitness; budgeting and communication skills.

• Skills for further learning and employment

• Enterprise

• Independence Skills

• Budgeting and Money Management

• Health & Wellbeing

• Digital Skills

Successful students may be able to progress to a Level 1 course in their chosen vocational area or a Supported Internship.

Become equipped with employability skills for success

This course is perfect for students who do not yet have the qualifications to progress onto Level 1 courses.

You will develop skills for further learning and employment, with opportunities to try the wider range of vocational courses at the College, through a vocational rotation lesson in subject areas you're interested in.

In addition to developing your English & maths, you will be getting prepared for adulthood with life skills such as health and wellbeing, fitness, budgeting, digital skills and communication skills.

Together, all this will help you decide what to study the following year or get you ready to take on the world of work.

Where will it take me?

Successful students may be able to progress to a Level 1 course, a Supported Internship, Apprenticeship or employment.

A tailored programme for you

Engage is our flexible programme which allows you to gain a full Entry Level 3 qualification in bite-size chunks.

Over an academic year, you may study up to three separate Engage course blocks. Each block is spread over 11 weeks.

Upon completion of one block, you will achieve an 'Entry Level 3 Award'.

Complete two blocks and you will achieve an 'Entry Level Certificate'.

To achieve the highest level, if you successfully complete three blocks, you will achieve an 'Entry Level 3 Extended Certificate'.

Depending upon your success and ability, you may then be able to progress to a Level 1 course, Apprenticeship, Supported Internship or employment.

Why you should choose Southport College

Our friendly and supportive teachers fully understand the need for flexibility and have a wealth of experience supporting learners.

We offer realistic working environments for you to learn in, plus a fantastic English and Maths Hub, with teachers and study mentors all on hand to help.

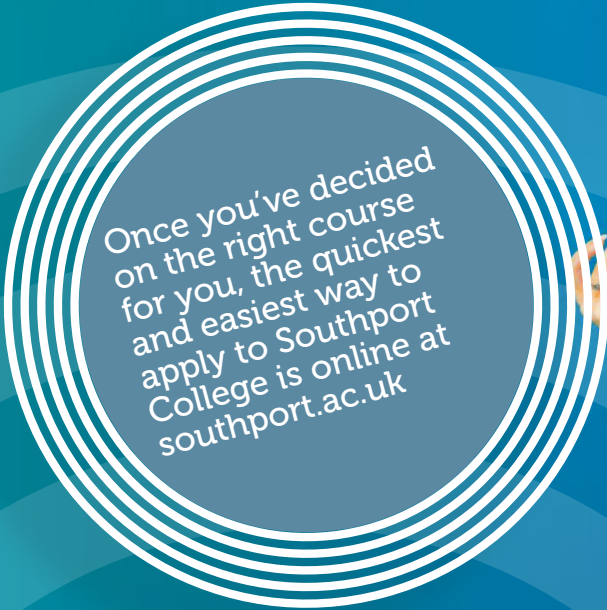
You will also have lots of opportunities to gain employment and communication skills and really grow your self confidence.



We are so proud to support our students' aspirations. As well as finding their future careers, many have progressed from Entry Level to Levels 1, 2, 3 and onto university!

HOW DO I APPLY?

Our open events are the ideal opportunity to view our fantastic facilities, meet our friendly, industry-experienced teachers, get a real feel for life at Southport College and to prepare for joining us in September. Families are welcome too and it's the perfect time to find about out our unrivalled student support, travel passes and lots of other important information.



STEP 1

Attend an Open Event

Autumn Term
Monday 6
October 2025
4.30 - 7.00pm

Spring Term
Thursday
20 November 2025
4.30 - 7.00pm

STEP 2

Apply online

southport.ac.uk

We advise our students to do this as early as possible as our most popular courses do fill up fast!

STEP 3

Your application

After we receive your application, you will need to book a course discussion to check if the course is right for you. It's also your chance to ask about things such as travel passes or learning support.

There are lots of dates to choose from and parents or guardians are welcome too.

STEP 4

Formal offer

Following a positive course discussion you will be offered a place to become a Southport College student.

Once you have finished your GCSE exams, you are invited to Welcomefest, our VIP event exclusively for students who will be joining us in September.

STEP 5

Enrolment

During the summer break all applicants will be sent a link to pre-enrol. This ensures we have all your correct details and speeds up the enrolment process on the day.

You will then be sent your individual enrolment date and time. This will usually be for either the day of or the day following GCSE results and takes place on campus.

You will need to bring proof of your results, complete your enrolment and collect your college ID badge, all ready for term to start.

It's very straightforward and parents or guardians are welcome too.

STEP 6

Joining us as a student

Your course will begin at the start of September 2026.

You will receive information about your start date and timetable at enrolment.

If you have any questions during any of these stages then please get in touch.



Creating Careers

Southport College
Morningson Road, Southport
PR9 0TT
01704 392704
www.southport.ac.uk

Southport College is committed to equality and diversity.

The College is dedicated to the active pursuit of an equal opportunities policy which addresses the need and right of everyone in the College to be treated with respect and dignity, in an environment in which a diversity of backgrounds and experiences is valued.

If this publication is required in an alternative format or language, or you wish to discuss any other specific requirements or adjustments for joining one of our courses, please contact our Student Information Centre on 01704 392704.

Information is correct at the time of going to press. Every effort is made to ensure accuracy.

The College reserves the right to withdraw or amend courses, entry requirements, fees and details included in this publication, or any other supporting publications or advertisements.

Courses are offered subject to viability of group size, minimum and maximum numbers, as defined by the College. Acceptance on to a course is at the discretion of Southport College.

All Southport College students are subject to the College's policies and procedures. Other terms and conditions may apply. This publication, produced in September 2025, supersedes any other publication or advertisement promoting these courses.

© Southport College 2025.

